



Hinged Fireproof Refrigeration Door  
for Comfort and Safety

# Hinged Fireproof Refrigeration Door (HD EI)

# HD EI Standard Delivery Set



- 1** Overhead metal frame

---

- 2** Frame mounting kit (optional)

---

- 3** Fermod 67 double rubber gasket

---

- 4** Protecting thermal expanding tape

---

- 5** Fermod 621 external handle

---

- 6** Fermod 621 internal handle

---

- 7** Response part of the lock

---

- 8** PH Insulation HD EI hinges

---

- 9** Closer

---

- 10** Metal bumper made of checkered plate (optional)

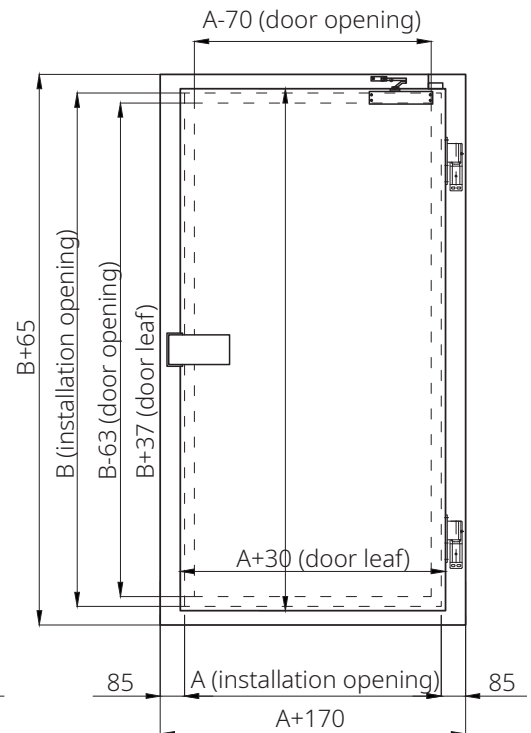
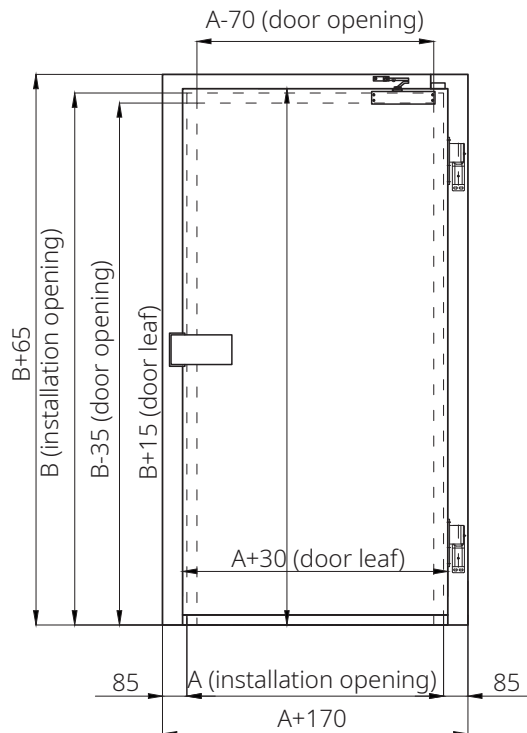
Without Threshold

With Threshold

Doorway height, mm  
Up to 2400 mm

Doorway width, mm  
Up to 1200 mm

Door leaf thickness, mm  
120 mm



# Hinged Fireproof Refrigeration Door

PH Insulation Hinged Fireproof Refrigeration Doors (HD EI) deliver utmost comfort and safety.

Fire resistance class — EI30.

PH Insulation HD EI are designed for cold chambers with high requirements for fire safety. The doors efficiently keep heat or cold and prevent fire and combustion products from spreading outside the room, diminishing property losses in case of emergency.

## DOOR LEAF

The door leaf is made of galvanized painted steel 0.6 mm thick and rigid PIR insulation core 120 mm thick.

The integrity and load-bearing capacity of the HD EI is enhanced by 2 mm thick metal embedded elements, which are installed inside the door leaf. A double thermal insulation seal and a thermal expansion tape are installed along the edge of the door leaf. When temperature gets over 150°C, the tape expands and fills the gap between the door leaf and the frame, preventing the spread of smoke and fire in neighboring rooms.

The door leaf of HD EI is assembled only with fireproof sealants and foams.

You can order the door in RAL 9003 or in any color of your choice.

## DOOR FRAME

HD EI is equipped with a rigid overhead profile frame made of 2 mm thick cold rolled steel. In standard assembly, door frame is painted with white color RAL 9003, or you can choose any other color available in RAL catalogue. You can also order a custom-made door with stainless steel frame AISI 304 or AISI 430.

To prevent the door leaf from freezing at sealing profile, a heating cable is installed inside the door frame. This option is necessary in case you use the door with a low-temperature refrigerator.

To simplify the door installation, the frame is made with technological holes for mounting and fixing accessories.



## Door hardware

HD EI is equipped with only metal hardware: reinforced fire hinges made by PH Insulation and a metal lock is made by Fermod, a top French manufacturer.



## DOOR OPTIONS

- Right or left opening
- Medium temperature for cold rooms or low temperature for freezing rooms
- With or without threshold
- Any color available in RAL catalogue
- Door leaf covering: Pural Farm, Granite Farm, Food Safe, PVDF, stainless steel AISI 304 or AISI 430

## THERMAL INSULATION

For thermal insulation core we use high-quality rigid PIR system from prominent European suppliers.

## CERTIFICATE

Fire protection properties of doors meet the requirements of the technical regulations on fire safety.

## Door Hardware



Fermod 621 door handle



PH Insulation reinforced hinges



Fermod 67 Dual rubber gasket

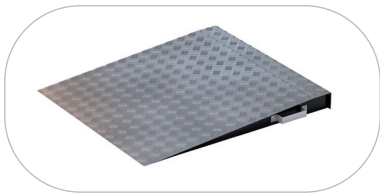


Sandwich panel mounting kit: reinforced thermowell, mounting pin, Erikson screw nut

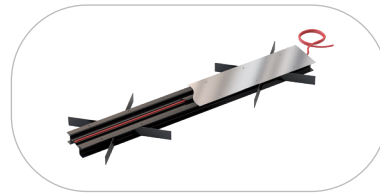


Lower seal for non-threshold doors

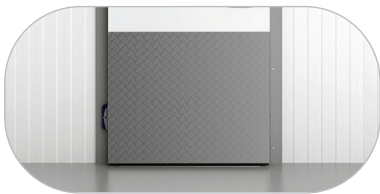
## Options



Ramp



Insulated Stainless Threshold



Bumper



PVC Curtain