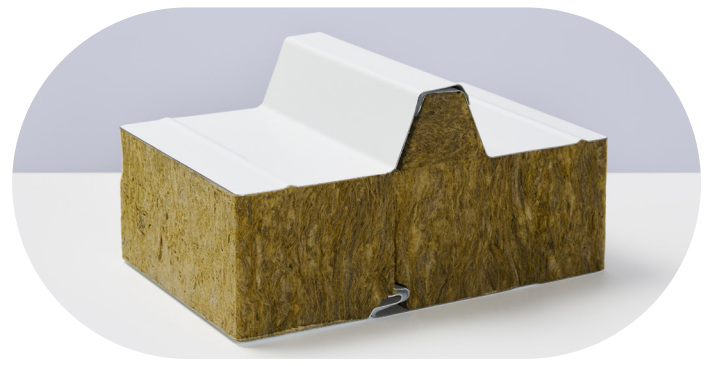


THE NUMBER OF FULL PACKS OF MINERAL WOOL ROOF INSULATED PANELS FOR TRUCK LOAD

PANEL WIDTH – 1 000 MM

TRUCK FLOOR SPACE – 13.6 X 2.45 X 2.6 M



LENGTH OF PANELS 3 M

Thickness of panels, mm	Panels per pack, A/B	Height of pack, mm	Packs per truck	Panels per truck	Panels in truck, sq. m	Weight of panels, kg
50	14 / 16	1060 / 1200	16	240	720	10820,2
60	14 / 14	1200 / 1200	16	224	672	10804,4
80	10 / 12	1080 / 1280	16	176	528	9598,0
100	8 / 10	1040 / 1280	16	144	432	8760,1
120	8 / 8	1200 / 1200	16	128	384	8593,2
150	6 / 7	1100 / 1290	16	104	312	7964,7
170	6 / 6	1220 / 1220	16	96	288	7956,9
200	4 / 6	960 / 1400	16	80	240	7386,7

LENGTH OF PANELS 4 M

Thickness of panels, mm	Panels per pack, A/B	Height of pack, mm	Packs per truck	Panels per truck	Panels in truck, sq. m	Weight of panels, kg
50	14 / 16	1060 / 1200	12	180	720	10820,2
60	14 / 14	1200 / 1200	12	168	672	10804,4
80	10 / 12	1080 / 1280	12	132	528	9598,0
100	8 / 10	1040 / 1280	12	108	432	8760,1
120	8 / 8	1200 / 1200	12	96	384	8593,2
150	6 / 7	1100 / 1290	12	78	312	7964,7
170	6 / 6	1220 / 1220	12	72	288	7956,9
200	4 / 6	960 / 1400	12	60	240	7386,7

LENGTH OF PANELS 6 M

Thickness of panels, mm	Panels per pack, A/B	Height of pack, mm	Packs per truck	Panels per truck	Panels in truck, sq. m	Weight of panels, kg
50	14 / 16	1060 / 1200	8	120	720	10820,2
60	14 / 14	1200 / 1200	8	112	672	10804,4
80	10 / 12	1080 / 1280	8	88	528	9598,0
100	8 / 10	1040 / 1280	8	72	432	8760,1
120	8 / 8	1200 / 1200	8	64	384	8593,2
150	6 / 7	1100 / 1290	8	52	312	7964,7
170	6 / 6	1220 / 1220	8	48	288	7956,9
200	4 / 6	960 / 1400	8	40	240	7386,7

LENGTH OF PANELS 8 M

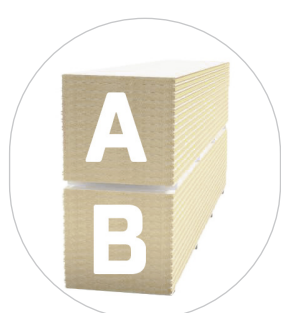
Thickness of panels, mm	Panels per pack, A/B	Height of pack, mm	Packs per truck	Panels per truck	Panels in truck, sq. m	Weight of panels, kg
50	14 / 16	1060 / 1200	4	60	480	7213,4
60	14 / 14	1200 / 1200	4	56	448	7202,9
80	10 / 12	1080 / 1280	4	44	352	6398,7
100	8 / 10	1040 / 1280	4	36	288	5840,1
120	8 / 8	1200 / 1200	4	32	256	5728,8
150	6 / 7	1100 / 1290	4	26	208	5309,8
170	6 / 6	1220 / 1220	4	24	192	5304,6
200	4 / 6	960 / 1400	4	20	160	4924,5

LENGTH OF PANELS 10 M

Thickness of panels, mm	Panels per pack, A/B	Height of pack, mm	Packs per truck	Panels per truck	Panels in truck, sq. m	Weight of panels, kg
50	14 / 16	1060 / 1200	4	60	600	9016,8
60	14 / 14	1200 / 1200	4	56	560	9003,7
80	10 / 12	1080 / 1280	4	44	440	7998,3
100	8 / 10	1040 / 1280	4	36	360	7300,1
120	8 / 8	1200 / 1200	4	32	320	7161,0
150	6 / 7	1100 / 1290	4	26	260	6637,3
170	6 / 6	1220 / 1220	4	24	240	6630,7
200	4 / 6	960 / 1400	4	20	200	6155,6

LENGTH OF PANELS 12 M

Thickness of panels, mm	Panels per pack, A/B	Height of pack, mm	Packs per truck	Panels per truck	Panels in truck, sq. m	Weight of panels, kg
50	14 / 16	1060 / 1200	4	60	720	10820,2
60	14 / 14	1200 / 1200	4	56	672	10804,4
80	10 / 12	1080 / 1280	4	44	528	9598,0
100	8 / 10	1040 / 1280	4	36	432	8760,1
120	8 / 8	1200 / 1200	4	32	384	8593,2
150	6 / 7	1100 / 1290	4	26	312	7964,7
170	6 / 6	1220 / 1220	4	24	288	7956,9
200	4 / 6	960 / 1400	4	20	240	7386,7



For calculation of packs per truck use formula $N/((A+B)/2)$, where N – quantity of panels, A – quantity of panels in upper pack, B – quantity of panels in lower pack.

Example: how to calculate quantity of packs for 150 roof panels with mineral wool, length of panels – 12 m, thickness of panels – 200 mm.

According to the table, N=150, A=4 pcs, B=6 pcs, so the equation will look like $150 / ((4 + 6) / 2) = 150 / 5 = 30$ packs. The result of the equation should be increased to the nearest whole number.